

# Current Imaging of Cerebrospinal Fluid Leaks

R Bullock, D Soares

## ABSTRACT

*A CSF leak results from a defect in the dura and skull base. Due to the risk of potentially devastating central nervous system infection, it is an important entity. Timely diagnosis of CSF leaks is crucial. Laboratory testing of nasal or aural fluid drainage for the presence of the protein Beta ( $\beta$ )-2 transferrin plays a key role in establishing the presence of a CSF leak. Such assays are not always available, making imaging pivotal in the diagnosis of this entity. The development of minimally invasive endoscopic repair further underscores the importance of imaging as precise anatomic localization is important for repair. In this article, we review the literature and make suggestions for the appropriate radiological investigation of patients with suspected CSF leaks.*

# Imágenes Médicas Actuales de Pérdidas de Fluido Cerebroespinal

R Bullock, D Soares

## RESUMEN

*Las pérdidas de fluido cerebroespinal (FCE) son el resultado de un defecto en la dura y la base craneal. Debido a que tales pérdidas presentan el riesgo de infecciones capaces de devastar potencialmente el sistema nervioso central, las mismas constituyen una entidad importante. El diagnóstico a tiempo de pérdidas del FCE es crucial. Las pruebas de laboratorio realizadas al drenaje del fluido de la nariz y los oídos a fin de detectar la proteína Beta ( $\beta$ ) 2 transferrina, desempeñan un papel clave a la hora de determinar la presencia de pérdida de FCE. Estos ensayos no se hallan siempre a disposición, con lo cual la imagen médica se hace fundamental para el diagnóstico de esta entidad. El desarrollo de reparaciones endoscópicas mínimamente invasivas subraya aún más la importancia de la imagen médica, por cuanto se requiere una localización anatómica precisa para realizar la reparación. En el presente artículo, se revisa la literatura y se hacen sugerencias a fin de lograr una investigación radiológica adecuada de los pacientes con sospecha de pérdida de FCE.*

West Indian Med J 2009; 58 (4): 362

## INTRODUCTION

Cerebrospinal fluid (CSF) is a protective fluid which circulates around the brain and spinal cord. The normal circulating volume is 90–150 mls (1). It is contained within dural coverings and overlying bone that protect it from the external environment. Combined dural and bony defects in the skull base allow CSF to leak. These defects may occur spontaneously or be secondary to trauma or surgical intervention (2). Leakage can occur into the paranasal sinuses and nasal cavity and less commonly through the petromastoid complex into the middle ear. Patients may present with CSF rhinorrhoea or otorrhoea. Cerebrospinal fluid (CSF) leaks can

resolve spontaneously (3, 4), however, as a result of the free communication with the intracranial space, there is an open portal for transmission of infection. The development of serious complications such as meningitis should never be ignored, a 10% risk of developing meningitis being cited in the literature (5, 6). Cerebrospinal fluid (CSF) leaks continue to present a diagnostic challenge as they are commonly mistaken for rhinorrhoea, however, clear rhinorrhoea may also mimic CSF leaks in extreme cases leading to unnecessary surgery (7).

## Pathophysiology and Causes of CSF Leaks

Cerebrospinal fluid leaks are caused when there is a combined bony and dural defect together with a sufficient pressure gradient that allows CSF to drain externally. The causes include skull base surgery (8, 9), spinal surgery (10), endoscopic sinus surgery (11, 12) and trauma (13, 14). Post-traumatic CSF leaks account for 50 – 80% of CSF leaks. It is seen in 2–6% of head injuries (15, 16). Rarely,

---

From: Department of Surgery, Radiology, Anaesthesia and Intensive Care, The University of the West Indies, Kingston 7, Jamaica.

Correspondence: Dr R Bullock, Section of Radiology, Department of Surgery, Radiology, Anaesthesia and Intensive Care, The University of the West Indies, Kingston 7, Jamaica. E-mail: richardbullock801@msn.com.

congenital defects, such as meningoceles (Fig. 1) lead to CSF leaks (17, 18). In many cases, there is no identifiable cause, so called “spontaneous” leaks (19).

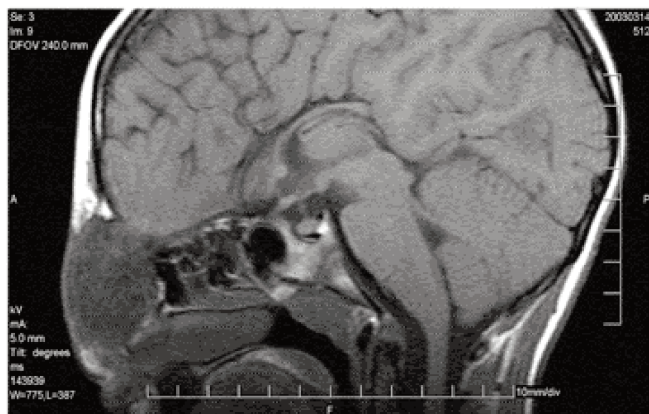


Fig. 1: Sagittal T1W1 of a 6-year old with a frontonasal mass and a watery nasal discharge.

Empty sella has been implicated in some of these spontaneous cases of CSF leak (20) as well as benign intracranial hypertension (21). Spontaneous leaks have also been recorded in the sphenoid sinus (22). Intracranial tumours, in particular those near the skull base have the potential for erosion of the dura and skull base with resultant CSF leak. This has been seen with pituitary adenomas (23). Radiation osteitis is also a recognized cause of CSF leak (24).

## Diagnosis of CSF Leaks

### Physical Examination

The clinical diagnosis may be difficult as CSF leaks may be intermittent or slow. A history of trauma or surgery may be obtained. Physical findings include a unilateral profuse watery discharge, exacerbated by posture or the Valsalva manoeuvre, or headache relieved by leakage of CSF through the ear or nostril. Clinical findings are unreliable and may be mistaken for vasomotor rhinitis (25, 26). Other symptoms relating to CSF hypovolaemia may be noted such as orthostatic headaches, nausea, dizziness, neck stiffness, blurred vision and tinnitus (27).

### Laboratory Analysis

Laboratory testing of nasal or aural fluid drainage plays a key role in establishing a CSF leak. Simple fluid tests such as sugar content are not reliable (28). Beta ( $\beta$ )-2-transferrin is a protein produced by neuramidase activity in the brain. It is found only in CSF, aqueous humour and perilymph. Beta trace protein is also present in CSF and has also been used as an immunological marker (29). Both are highly specific for confirmation of the presence of CSF (100%) with sensitivities of 84% and 91% respectively (30, 31). False positives can occur in patients with chronic liver disease and inborn errors of glycoprotein metabolism (32). As physical examination may be unreliable, it is therefore felt that such

fluid tests should be mandatory (7). In more recent times, there has been a more novel approach to distinguishing between CSF and nasal mucus, an electronic nose (33).

## Radiological Evaluation

In the absence of transferrin testing, imaging plays a key role in establishing the existence of a CSF leak. Imaging is also important in accurately identifying the site of leaks to facilitate appropriate treatment.

Several imaging modalities have been utilized to demonstrate the site of leakage historically while newer techniques continue to evolve. These modalities include plain radiography, computed tomography (CT), CT cisternography (CTC), magnetic resonance imaging (MRI), MRI with intrathecal contrast (MR cisternography or MRC) and radionuclide cisternography.

### Plain films

Plain films are very insensitive in establishing the diagnosis of a CSF leak but may demonstrate pneumocephalus as defects in the paranasal sinuses may leak air into the cranial vault at the same time as CSF drainage into the sinuses (34). Cerebrospinal fluid leaks result from basilar skull fractures which are suboptimally depicted on plain radiographs but an air-fluid level in the sphenoid sinus may be used as a non-localizing finding (35).

### Computed Tomography

High resolution CT gives excellent bone detail. It is the best modality for demonstrating base of skull fractures, particularly with multidetector scanners. In cases of CSF rhinorrhoea, the technique involves thin (usually 1–2 mm) sections through the anterior and middle cranial fossa skull base. For otorrhoea, both axial and coronal 2 mm sections are acquired through the petrous temporal bone. Computed Tomography may demonstrate fractures of the cribriform plate (Fig. 2). Sphenoid sinus or petromastoid complex fractures may also be seen, as well as congenital bony defects secondary to meningoceles. Computed Tomography has a reported sensitivity of 89% (36), there being false positives from volume averaging and vascular grooves in the cribriform plate. The recent addition of multidetector CT (MDCT) has further improved the sensitivity of this modality (37).

### CT Cisternography

The CT cisternography (CTC) is an invasive technique requiring intrathecal puncture. It therefore carries the risks associated with a lumbar puncture. These include spinal headaches, CNS infection and rarely seizures. Following lumbar puncture, contrast is instilled and thin CT sections as described above are performed. The CT cisternography findings in a patient with a CSF leak include concentration of contrast medium in a sinus or mastoid air cell or a stream of contrast at the fistula site (Fig. 3). The sensitivity for detection of a CSF leak with CT cisternography was found to

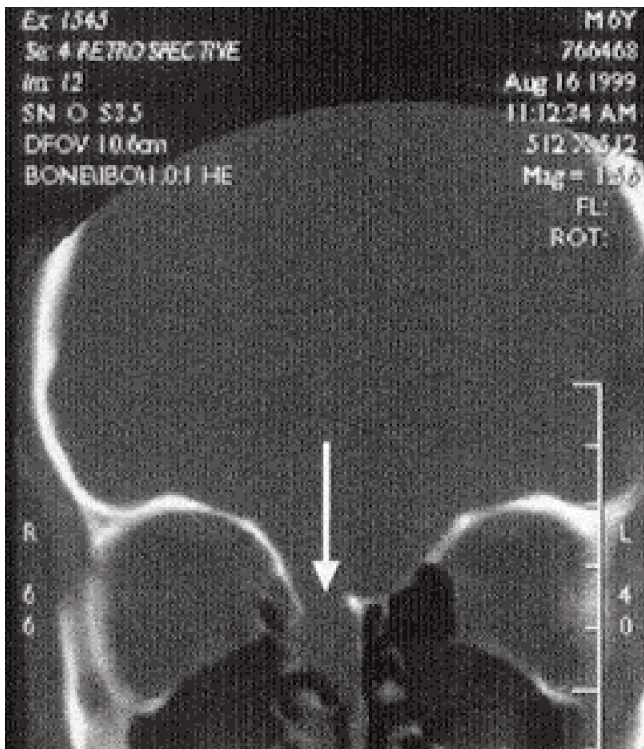


Fig. 2: Coronal CT of a patient with a 2-year history of CSF rhinorrhoea showing a defect in the cribriform plate.

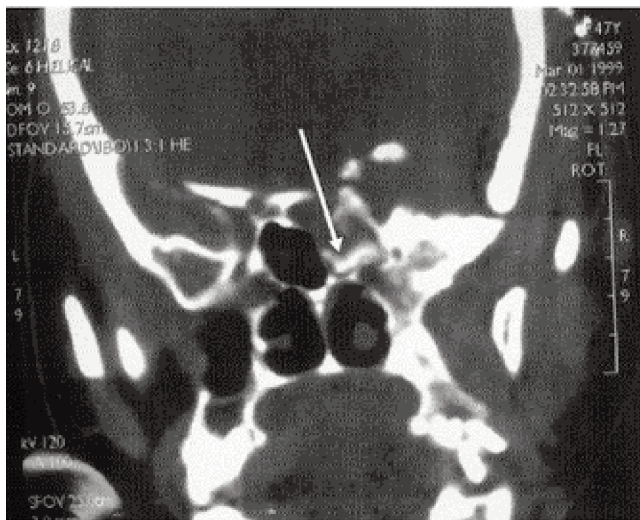


Fig. 3: CT cisternogram of a patient with postoperative CSF rhinorrhoea showing contrast entering the sphenoid sinus through a bony defect.

be 65 – 85% by Stone *et al* (38). When comparing CT with CTC, no cases of a CSF leak were seen at CTC that did not have a bone defect at CT. We therefore reserve CTC for cases in which CT showed multiple bone defects or no bone defect.

### Radionuclide Cisternography

Radionuclide cisternography involves the intrathecal injection of radioisotopes. Isotopes employed for this purpose include  $^{99m}$  Technetium and Indium $^{111}$ . Cotton pledgets are placed in the nose and these are later removed and measured for tracer activity. The sensitivity for detecting CSF leaks is in the range of 50 – 100% (39). The specificity is almost 100% for contemporary radionuclide cisternography (40). It is not widely used today due to the greater sensitivity provided by high resolution CT (38).

### Magnetic Resonance Imaging

Magnetic Resonance (MR) imaging can be used to demonstrate a CSF fistula in multiple planes non-invasively without the disadvantage of ionizing radiation or intrathecal injection of contrast. Coronal T2W fat suppressed sequences should be routinely employed as part of the protocol (36) as it demonstrates the CSF fistula (dural tear) as a high signal cleft traversing low signal bone. Its accuracy in patients with active CSF rhinorrhoea is 89% (41). Whereas CT may demonstrate more precisely the extent of a bony defect, in the case of meningoceles, MRI will be more valuable in differentiating the contents of the sac (Fig. 1).

### Intrathecal Gadolinium Enhanced MR

Intrathecal gadolinium enhanced MRI is a more recent addition to the core of investigations available for detecting CSF leaks. In 1997, the first pilot study of its use was undertaken with eleven patients (42). It involves the intrathecal injection of contrast agent gadopentate dimeglumine by lumbar puncture. In the follow-up study involving ninety-five patients in a multi-centre study, no adverse effects were noted (43). A recent article by Albayram showed a sensitivity of 89% with a higher yield than CT cisternography (44). Goel *et al* had previously demonstrated similar findings in a smaller series (45) as did a subsequent multicentre study by Aydin *et al* (46).

### Combined CT/MRI

Establishing a CSF leak requires demonstrating a combined dural and bony defect. The CT cisternography and radionuclide cisternography can demonstrate such defects but have potential risks as previously outlined and can be a source of patient discomfort. Demonstrating a bone defect at high resolution CT and a dural defect at MRI at the same level can essentially give the same information as cisternography without the risk. Combined CT and MRI (with independent observers) accurately localized the site of leakage with a sensitivity of 89.74% (36).

### Clinical and laboratory correlation

Cerebrospinal fluid (CSF) leaks, though uncommon, continue to present a diagnostic challenge. They may be slow and intermittent or mistaken for rhinitis. Timely diagnosis is



crucial due to the potential for CNS infection. The reported frequency of CSF leaks with meningitis varies and can be as high as 50% (47, 48). Some cases of CSF leak do resolve spontaneously and the use of prophylactic antibiotics is debatable but advocated by some authors. It may reduce, but not eliminate, the risk of infection (49). Therefore, physicians should have a high index of suspicion of CSF leaks in patients with clear watery nasal discharge in the absence of upper respiratory tract infection or similar aural discharge, particularly if there is a history of trauma or if the patient had been treated for rhinitis (26). In such cases, urgent referral to an ENT or neurosurgical service should be made.

Assays for the presence of  $\beta$ -2 transferrin and  $\beta$ -2 trace protein form an essential first line of investigation to confirm the presence of CSF in nasal or aural fluid drainage. When these confirmatory laboratory tests are unavailable, the radiologist's role is paramount. In light of the reported accuracy of combined non-invasive techniques such as CT and MRI, less reliance should be placed on the use of invasive techniques such as CTC or radionuclide cisternography. It is essential that the teams involved in the patient care develop a working algorithm for investigating these patients (Fig. 4).

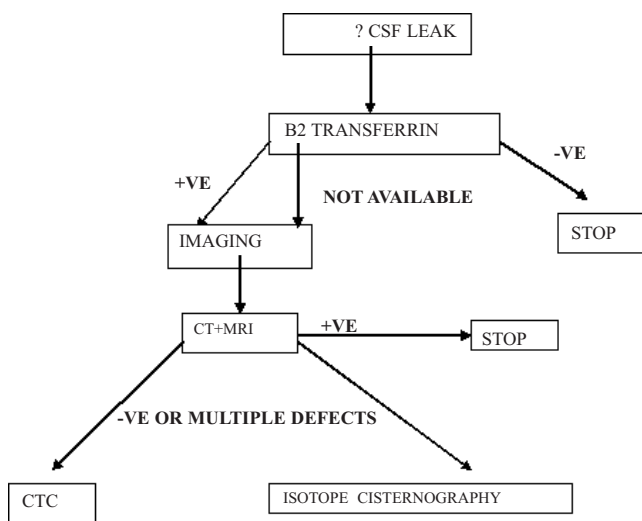


Fig. 4: Suggested algorithm for imaging a patient with suspected CSF leak.

The combination of non-invasive diagnostic techniques (MRI/CT) with high sensitivities and specificities has led to a decline in the use of CTC and radionuclide studies, the latter two modalities being used only in equivocal cases. CSF leaks, though a diagnostic challenge, can be managed successfully with the correct team approach.

## REFERENCES

- Standrin S. Gray's anatomy: the anatomical basis of clinical practice. 40th ed: Churchill Livingstone; 2008.
- Abuabara A. Cerebrospinal fluid rhinorrhoea: diagnosis and management. *Med Oral Patol Oral Cir Bucal* 2007; **12**: E397–400.

- Calcaterra TC, Moseley JI, Rand RW. Cerebrospinal Rhinorrhoea: extracranial surgical repair. *West J Med* 1977; **127**: 279–83.
- Lindstrom DR, Toohill RJ, Loehrl TA, Smith TL. Management of cerebrospinal fluid Rhinorrhoea: the Medical College of Wisconsin experience. *Laryngoscope* 2004; **114**: 969–74.
- Daudia A, Biswas D, Jones NS. Risk of meningitis with cerebrospinal fluid Rhinorrhoea. *Ann Otol Rhinol Laryngol* 2007; **116**: 902–05.
- Jones NS, Becker DG. Advances in the management of CSF leaks. *BMJ* 2001; **322**: 122–23.
- Bateman N, Jones NS. Rhinorrhoea feigning cerebrospinal fluid leak: nine illustrative cases. *J Laryngol Otol* 2000; **114**: 462–64.
- Deschler DG, Gutin PH, Mamelak AN, McDermott MW, Kaplan MJ. Complications of anterior skull base surgery. *Skull Base Surg* 1996; **6**: 113–18.
- Bani A, Gilsbach JM. Incidence of cerebrospinal fluid leak after microsurgical removal of vestibular schwannomas. *Acta Neurochir (Wien)* 2002; **144**: 979–82; discussion 982.
- Black P. Cerebrospinal fluid leaks following spinal surgery: use of fat grafts for prevention and repair. Technical note. *J Neurosurg* 2002; **96** (2 Suppl): 250–52.
- Shiley SG, Limonadi F, Delashaw JB, Barnwell SL, Anderson PE, Hwang PH et al. Incidence, etiology, and management of cerebrospinal fluid leaks following trans-sphenoidal surgery. *Laryngoscope* 2003; **113**: 1283–88.
- Netea-Maier RT, van Lindert EJ, den Heijer M, Van der Eerden A, Pieters GF, Sweep CG et al. Transsphenoidal pituitary surgery via the endoscopic technique: results in 35 consecutive patients with Cushing's disease. *Eur J Endocrinol* 2006; **154**: 675–84.
- Kaufman BA, Tunkel AR, Pryor JC, Dacey RG Jr. Meningitis in the neurosurgical patient. *Infect Dis Clin North Am* 1990; **4**: 677–01.
- Friedman JA, Ebersold MJ, Quast LM. Post-traumatic cerebrospinal fluid leakage. *World J Surg* 2001; **25**: 1062–66.
- Lewin W. Cerebrospinal fluid rhinorrhoea in closed head injuries. *Br J Surg* 1954; **42**: 1–18.
- Calcaterra TC. Extracranial surgical repair of cerebrospinal Rhinorrhoea. *Ann Otol Rhinol Laryngol* 1980; **89**: 108–16.
- Bagger-Sjoberg D, Bergstrand G, Edner G, Anggard A. Nasal meningoencephalocele. A clinical problem. *Clin Otolaryngol Allied Sci* 1983; **8**: 329–35.
- Petrus LV, Lo WW. Spontaneous CSF otorrhea caused by abnormal development of the facial nerve canal. *AJNR Am J Neuroradiol* 1999; **20**: 275–77.
- Dunn CJ, Alaani A, Johnson AP. Study on spontaneous cerebrospinal fluid rhinorrhoea: its aetiology and management. *J Laryngol Otol* 2005; **119**: 12–15.
- Schlosser RJ, Bolger WE. Significance of empty sella in cerebrospinal fluid leaks. *Otolaryngol Head Neck Surg* 2003; **128**: 32–38.
- Schlosser RJ, Woodworth BA, Wilensky EM, Grady MS, Bolger WE. Spontaneous cerebrospinal fluid leaks: a variant of benign intracranial hypertension. *Ann Otol Rhinol Laryngol* 2006; **115**: 495–00.
- Shetty PG, Shroff MM, Fatterpekar GM, Sahani DV, Kirtane MV. A retrospective analysis of spontaneous sphenoid sinus fistula: MR and CT findings. *AJNR Am J Neuroradiol* 2000; **21**: 337–42.
- Honegger JB, Psaras T, Petrick M, Beuschlein F, Reincke M. Spontaneous cerebrospinal fluid Rhinorrhoea in untreated macroprolactinoma – an indication for primary surgical therapy. *Zentralbl Neurochir* 2006; **67**: 149–54.
- King AD, Ahuja AT, Yeung DK, Wong JK, Lee YY, Lam WW et al. Delayed complications of radiotherapy treatment for nasopharyngeal carcinoma: imaging findings. *Clin Radiol* 2007; **62**: 195–03.
- Brockbank MJ, Veitch DY, Thomson HG. Cerebrospinal fluid in the rhinitis clinic. *J Laryngol Otol* 1989; **103**: 281–83.
- Patel PN, Oyefara B, Aarstad R, Bahna SL. Rhinorrhoea not responding to nasal corticosteroids. *Allergy Asthma Proc* 2007; **28**: 735–38.
- Chung SJ, Kim JS, Lee MC. Syndrome of cerebral spinal fluid hypovolemia: clinical and imaging features and outcome. *Neurology* 2000; **55**: 1321–27.

28. Chan DT, Poon WS, Ip CP, Chiu PW, Goh KY. How useful is glucose detection in diagnosing cerebrospinal fluid leak? The rational use of CT and Beta-2 transferrin assay in detection of cerebrospinal fluid fistula. *Asian J Surg* 2004; **27**: 39–42.
29. Bachmann G, Achtelik R, Nekic M, Michel O. Beta-trace protein in diagnosis of cerebrospinal fluid fistula. *Hno* 2000; **48**: 496–500.
30. Warnecke A, Averbeck T, Wurster U, Harmening M, Lenarz T, Stöver T et al. Diagnostic relevance of beta2-transferrin for the detection of cerebrospinal fluid fistulas. *Arch Otolaryngol Head Neck Surg* 2004; **130**: 1178–84.
31. Risch L, Lisec I, Jutzi M, Podvinec M, Landolt H, Huber AR et al. Rapid, accurate and non-invasive detection of cerebrospinal fluid leakage using combined determination of beta-trace protein in secretion and serum. *Clin Chim Acta* 2005; **351**: 169–76.
32. Roelandse FW, van der Zwart N, Didden JH, van Loon J, Souverijn JH. Detection of CSF leakage by isoelectric focusing on polyacrylamide gel, direct immunofixation of transferrins and silver staining. *Clin Chem* 1998; **44**: 351–53.
33. Aronzon A, Hanson CW, Thaler ER. Differentiation between cerebrospinal fluid and serum with electronic nose. *Otolaryngol Head Neck Surg* 2005; **133**: 16–19.
34. Kale US, Raje SG, Wight RG. The management of massive pneumocephalus and cerebrospinal fluid rhinorrhoea as a consequence of biopsy in a patient with inverted papilloma. *J Laryngol Otol* 1998; **112**: 657–59.
35. Tamakawa Y, Hanafee WN. Cerebrospinal fluid Rhinorrhoea: the significance of an air-fluid level in the sphenoid sinus. *Radiology* 1980; **135**: 101–3.
36. Mostafa BE, Khafagi A. Combined HRCT and MRI in the detection of CSF Rhinorrhoea. *Skull Base* 2004; **14**: 157–62; discussion 162.
37. La Fata V, McLean N, Wise SK, DelGaudio JM, Hudgins PA. CSF leaks: correlation of high-resolution CT and multiplanar reformations with intraoperative endoscopic findings. *AJNR Am J Neuroradiol* 2008; **29**: 536–41.
38. Stone JA, Castillo M, Neelon B, Mukherji SK. Evaluation of CSF leaks: high-resolution CT compared with contrast-enhanced CT and radionuclide cisternography. *AJNR Am J Neuroradiol* 1999; **20**: 706–12.
39. Mitjavila M, Balsa MA, Penin J, Pey C. Radionuclide cisternography in spontaneous intracranial hypotension syndrome. *Rev Esp Med Nucl* 2004; **23**: 338–42.
40. Grantham VV, Blakley B, Winn J. Technical review and considerations for a cerebrospinal fluid leakage study. *J Nucl Med Technol* 2006; **34**: 48–51.
41. Tuntiyatorn L, Laothammatas J. Evaluation of MR cisternography in diagnosis of cerebrospinal fluid fistula. *J Med Assoc Thai* 2004; **87**: 1471–76.
42. Zeng Q, Xiong L, Jenkins JR, Fan Z, Liu Z. Intrathecal gadolinium-enhanced MR myelography and cisternography: a pilot study in human patients. *AJR Am J Roentgenol* 1999; **173**: 1109–15.
43. Tali ET, Ercan N, Krumina G, Rudwan M, Mironov A, Zeng QY et al. Intrathecal gadolinium (gadopentetate dimeglumine) enhanced magnetic resonance myelography and cisternography: results of a multicenter study. *Invest Radiol* 2002; **37**: 152–59.
44. Albayram S, Kilic F, Ozer H, Baghaki S, Kocer N, Islak C et al. Gadolinium-enhanced MR cisternography to evaluate dural leaks in intracranial hypotension syndrome. *AJNR Am J Neuroradiol* 2008; **29**: 116–21.
45. Goel G, Ravishankar S, Jayakumar PN, Vasudev MK, Shivshankar JJ, Rose D et al. Intrathecal gadolinium-enhanced magnetic resonance cisternography in cerebrospinal fluid Rhinorrhoea: road ahead? *J Neurotrauma* 2007; **24**: 1570–75.
46. Aydin K, Terzibasoglu E, Sencer S, Sencer A, Suoglu Y, Karasu A et al. Localization of cerebrospinal fluid leaks by gadolinium-enhanced magnetic resonance cisternography: a 5-year single-center experience. *Neurosurgery* 2008; **62**: 584–89; discussion 584–89.
47. Eljamel MS, Foy PM. Acute traumatic CSF fistulae: the risk of intracranial infection. *Br J Neurosurg* 1990; **4**: 381–85.
48. De Paula Vernetta C, Ramirez Sabio JB, Garcia Callejo J, Serrano Caranana MN, Marco Algarra J. Cerebro spinal fluid (CSF) leaks in ear: revision of 5 cases. *Acta Otorrinolaringol Esp* 2005; **56**: 273–79.
49. Friedman JA, Ebersold MJ, Quast LM. Persistent posttraumatic cerebrospinal fluid leakage. *Neurosurg Focus* 2000; **9**: e1